

# Scrutiny Panel

# Crime and ASB Performance

# Overview

October 2017

# Performance Overview



- Mayor's Police and Crime Plan (2017-2021) has outlined key priorities for Haringey:

## Mandatory High Harm Crimes:

- Sexual Violence
- Domestic Abuse
- Child Sexual Exploitation
- Weapon-Based Crime
- Hate Crime

## Mandatory Volume Crime:

- Anti-Social Behaviour

## Local Priorities:

- Robbery
- Non-Domestic Violence with Injury (VWI)

- Key focus on Violence, Vulnerability and Exploitation, whilst balancing response to volume crime

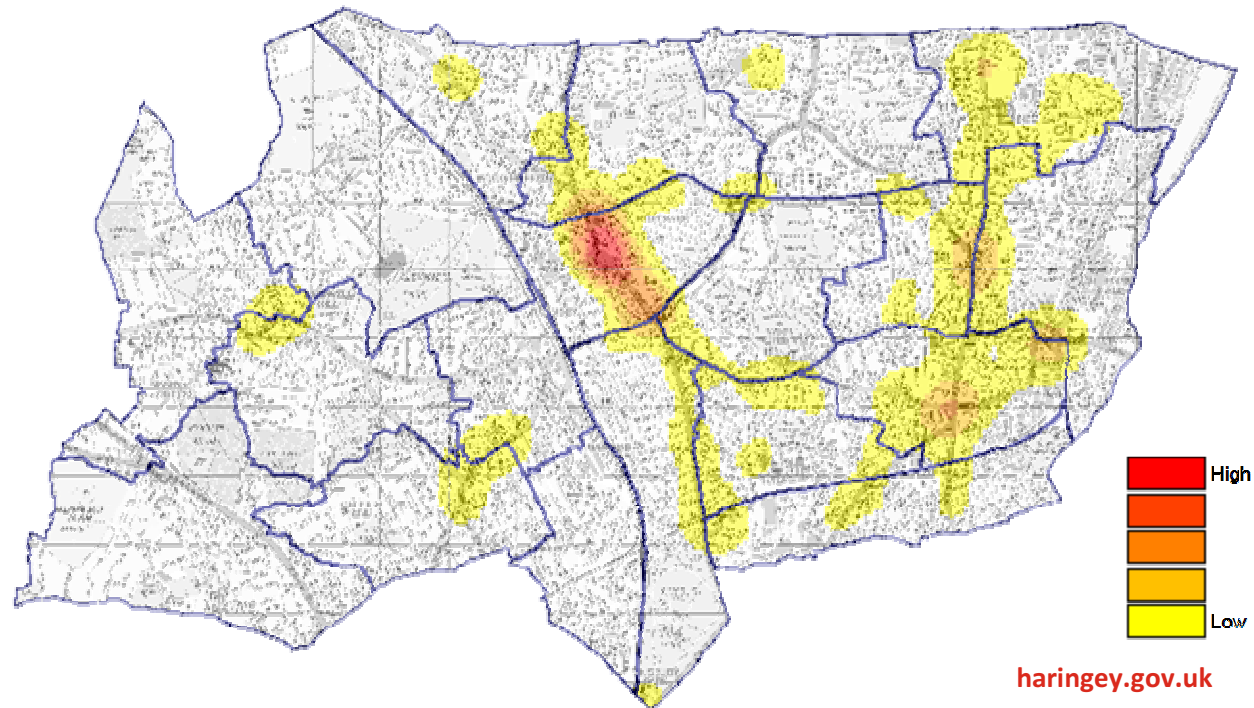
- Ranking tables show Haringey in the London context (No.1 indicates best performing borough)

# Total Notifiable Offences



Borough	TNO	London Rank
Lambeth	-3.0%	1
Lewisham	-1.2%	2
Hammersmith and Fulham	-1.1%	3
Ealing	0.5%	4
Harrow	0.9%	5
Barnet	1.2%	6
Kensington and Chelsea	1.3%	7
Barking and Dagenham	1.3%	8
Waltham Forest	1.7%	9
Croydon	2.0%	10
Merton	2.0%	11
Wandsworth	2.5%	12
Southwark	3.1%	13
Havering	3.3%	14
Brent	3.7%	15
Enfield	4.0%	16
Tower Hamlets	6.4%	17
Kingston upon Thames	7.6%	18
Sutton	7.6%	19
Redbridge	7.7%	20
<b>Haringey</b>	<b>8.0%</b>	21
Hounslow	8.1%	22
Bromley	8.2%	23
Hillingdon	8.4%	24
Greenwich	8.4%	25
Newham	8.8%	26
Bexley	9.6%	27
Westminster	10.1%	28
Islington	10.7%	29
Hackney	11.3%	30
Richmond upon Thames	12.4%	31
Camden	16.2%	32
<b>London Total</b>	<b>5.4%</b>	

- Overall recorded crime in Haringey has increased by 8% in the 12 months to August 2017, compared to a London wide average increase of 5%.
- The main hotspots are located around Wood Green High Road and around the A10 corridor, from Bruce Grove to Seven Sisters.



# Hate Crime



- There has been a London wide trend of increased reports of hate crime over the past year.
- Haringey has experienced an increase of +25% in hate crime reports in the 12 months to June 2017. London as a whole has seen an increase of +22%

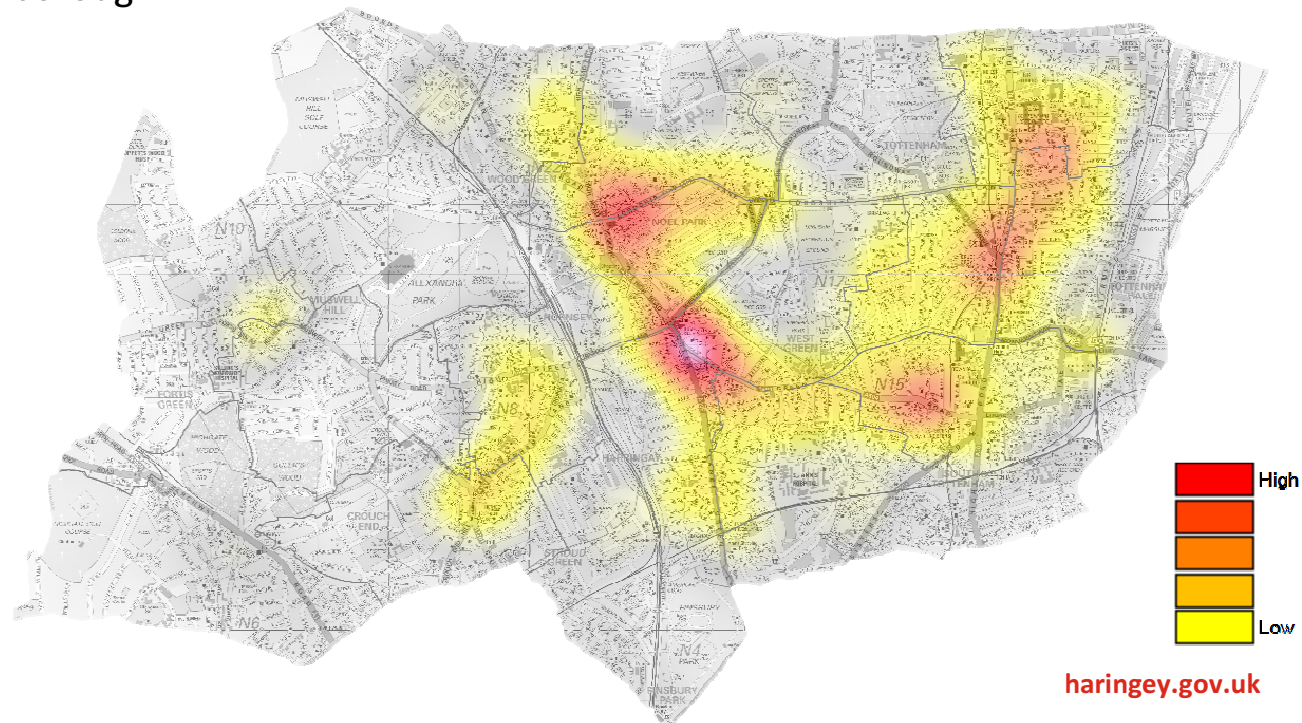
	Haringey July 2015 – June 2016	Haringey July 2016 – June 2017	Haringey Change %	London Change %
<b>Racist &amp; Religious Hate Crime</b>	539	698	<b>+29%</b>	+24%
<b>Homophobic Hate Crime</b>	74	74	0%	+10%
<b>Anti-Semitic Hate Crime</b>	31	27	<b>-13%</b>	+12%
<b>Islamophobic Hate Crime</b>	41	61	<b>+49%</b>	+25%

# Domestic Abuse Violence with Injury



Borough	Domestic Abuse VWI	London Rank
Waltham Forest	-17.9%	1
Kingston upon Thames	-11.6%	2
Redbridge	-11.4%	3
Islington	-10.4%	4
Enfield	-9.7%	5
Newham	-8.1%	6
Merton	-6.8%	7
Southwark	-6.1%	8
Sutton	-4.7%	9
Hillingdon	-4.6%	10
Ealing	-4.3%	11
Hackney	-4.1%	12
Wandsworth	-3.1%	13
Havering	-2.9%	14
<b>Haringey</b>	<b>-2.3%</b>	<b>15</b>
Hammersmith and Fulham	-2.1%	16
Harrow	-1.4%	17
Tower Hamlets	-1.2%	18
Barking and Dagenham	-1.0%	19
Lewisham	0.7%	20
Barnet	1.1%	21
Lambeth	2.1%	22
Camden	3.2%	23
Greenwich	4.3%	24
Brent	6.0%	25
Croydon	6.6%	26
Westminster	7.1%	27
Bromley	7.9%	28
Hounslow	8.2%	29
Bexley	9.0%	30
Richmond upon Thames	14.2%	31
Kensington and Chelsea	18.1%	32
<b>London Total</b>	<b>-1.4%</b>	

- Domestic Abuse VWI in Haringey has decreased by **-2.3%** in the 12 months to August 2017, compared to a London wide average decrease of **-1.4%**.
- Offending takes place primarily in residential locations, with hotspots in Turnpike Lane, Wood Green and Bruce Grove.
- Over two-thirds of all Domestic Abuse VWI occurs to the East of the borough.





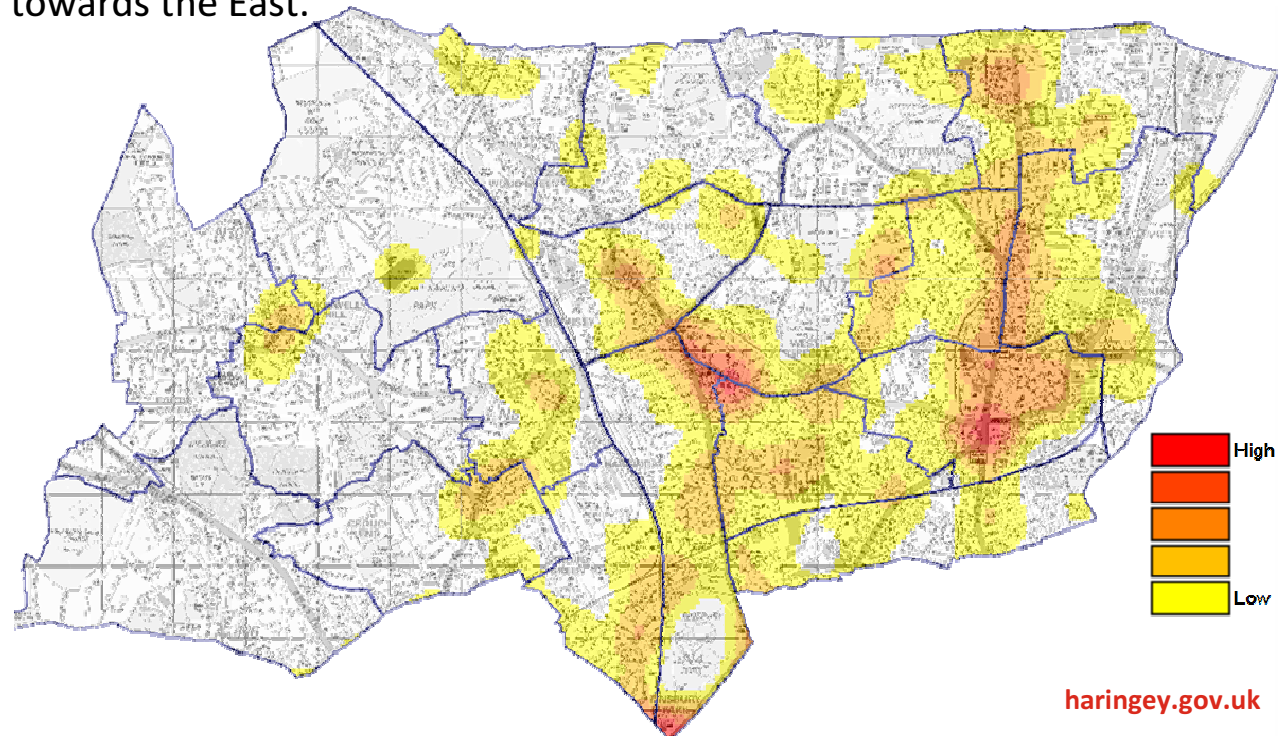
# Sexual Offences

Borough	Sexual Offences	London Rank
Redbridge	-8.9%	1
Newham	-7.7%	2
Tower Hamlets	-4.4%	3
Merton	-3.0%	4
Barking and Dagenham	-2.8%	5
Enfield	-0.6%	6
Ealing	0.0%	7
Lambeth	0.6%	8
Westminster	0.6%	9
Hammersmith and Fulham	3.3%	10
Waltham Forest	3.8%	11
Camden	4.9%	12
Hackney	5.1%	13
Wandsworth	5.5%	14
Greenwich	6.3%	15
Croydon	7.7%	16
<b>Haringey</b>	<b>8.6%</b>	17
Lewisham	9.4%	18
Bexley	9.5%	19
Havering	9.6%	20
Bromley	10.3%	21
Kensington and Chelsea	10.5%	22
Southwark	12.1%	23
Kingston upon Thames	16.0%	24
Hounslow	16.3%	25
Brent	16.4%	26
Islington	20.6%	27
Barnet	21.3%	28
Harrow	23.2%	29
Hillingdon	25.4%	30
Sutton	30.3%	31
Richmond upon Thames	43.6%	32
<b>London Total</b>	<b>7.2%</b>	

Overall sexual offences in Haringey have increased by 8.6% in the 12 months to August 2017, similar to the London wide average increase of 7.2%.

37% of sexual offences in Haringey are categorised in the most serious category of rape, which is similar to the London wide picture

Offences are spread across entire borough, with more clustering towards the East.



# Personal Robbery

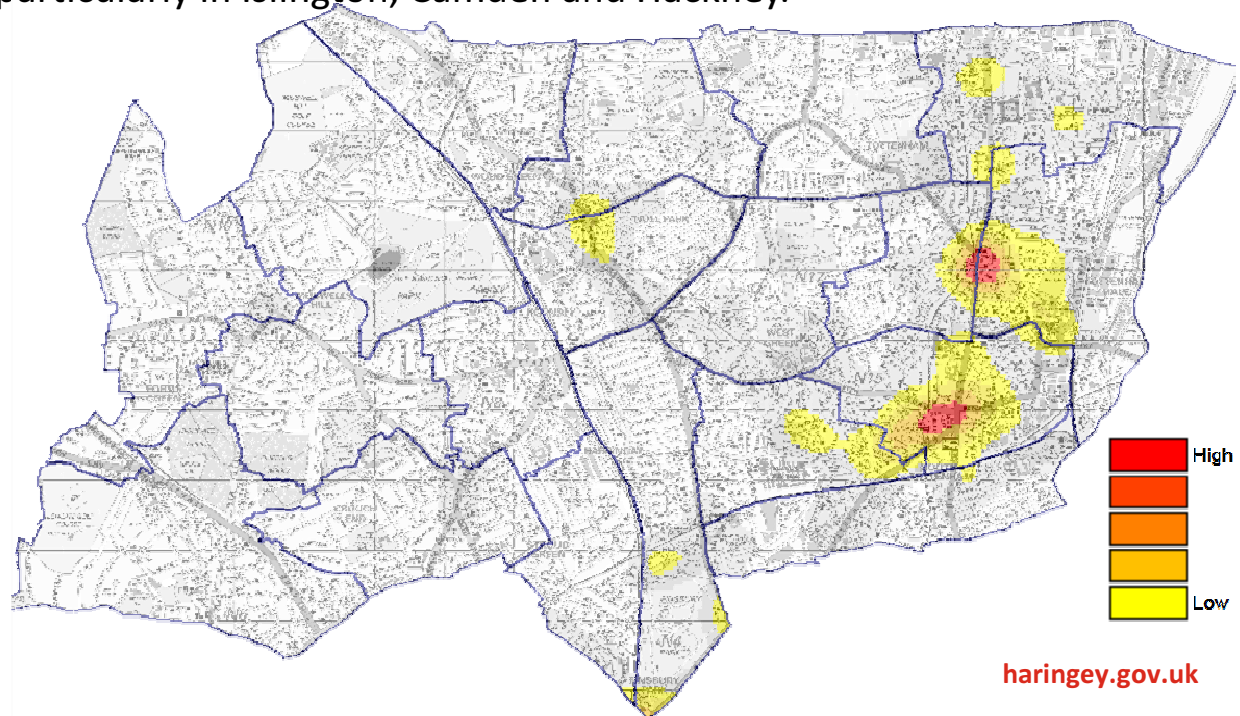


Borough	Personal Robbery	London Rank
Harrow	-7.0%	1
Brent	-3.8%	2
Hounslow	7.6%	3
Ealing	9.5%	4
Wandsworth	10.8%	5
Barnet	14.4%	6
Greenwich	17.2%	7
Lewisham	18.2%	8
Croydon	21.2%	9
Enfield	21.3%	10
Lambeth	21.6%	11
Barking and Dagenham	21.8%	12
Waltham Forest	22.9%	13
Bexley	24.3%	14
Redbridge	24.4%	15
Tower Hamlets	25.0%	16
Kingston upon Thames	25.4%	17
Kensington and Chelsea	25.7%	18
Merton	27.2%	19
Westminster	29.5%	20
Southwark	31.4%	21
<b>Haringey</b>	<b>32.2%</b>	22
Hillingdon	35.5%	23
Sutton	44.6%	24
Hackney	44.8%	25
Hammersmith and Fulham	45.2%	26
Newham	47.5%	27
Richmond upon Thames	50.9%	28
Havering	57.1%	29
Islington	59.1%	30
Bromley	68.1%	31
Camden	73.2%	32
<b>London Total</b>	<b>29.3%</b>	

Personal robbery has increased significantly in Haringey, by 32%, an additional 364 offences per year. London wide offending has also worsened, experiencing an increase of 29%.

In particular, robbery of mobile phones has seen an increase of 55% in Haringey (701 in 12 months), which is significantly above the London increase in this same category of 28%.

Moped enabled robbery continues to be an issue in London, particularly in Islington, Camden and Hackney.



# Knife Injury Victims Aged Under 24



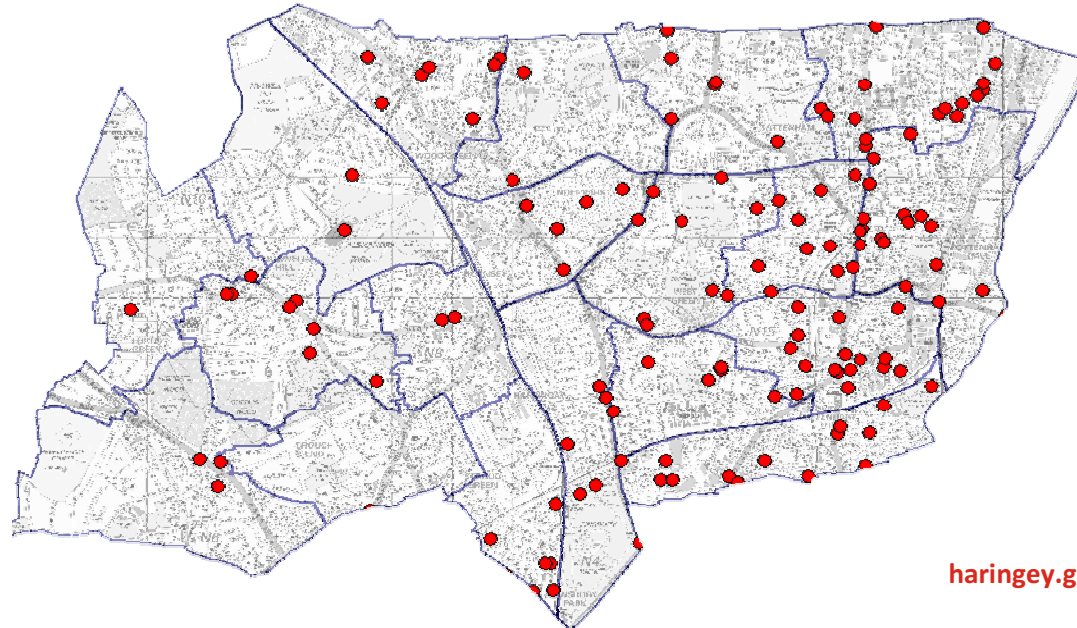
Borough	Knife Injury Victims Aged Under 24	London Rank
Merton	-31.3%	1
Kensington and Chelsea	-25.6%	2
Barnet	-20.6%	3
Islington	-20.3%	4
Barking and Dagenham	-15.0%	5
Ealing	-13.8%	6
Redbridge	-12.5%	7
<b>Haringey</b>	<b>-12.4%</b>	8
Tower Hamlets	-4.0%	9
Sutton	5.3%	10
Camden	5.6%	11
Brent	11.8%	12
Newham	12.5%	13
Hounslow	14.3%	14
Croydon	15.5%	15
Southwark	20.0%	16
Waltham Forest	20.8%	17
Hammersmith and Fulham	23.3%	18
Greenwich	27.0%	19
Hackney	27.4%	20
Lambeth	28.2%	21
Bromley	31.0%	22
Wandsworth	35.3%	23
Lewisham	36.4%	24
Hillingdon	40.5%	25
Havering	47.6%	26
Bexley	50.0%	27
Harrow	58.1%	28
Richmond upon Thames	63.6%	29
Kingston upon Thames	76.9%	30
Westminster	94.7%	31
Enfield	102.3%	32
<b>London Total</b>	<b>14.7%</b>	

■ Haringey has experienced a reduction in young victims of knife injuries, reducing by **-12.4%**. During this period, London overall has increased by **14.7%**.

■ **However, serious incidents still occur, which often lead to serious and life-changing injuries.**

■ Key locations are Wood Green High Street, Turnpike Lane and Bruce Grove / Lansdowne Road

■ Hotspots have continue to shift, following targeted partnership work in long standing high volume locations





# Lethal Barrelled Firearm Discharges

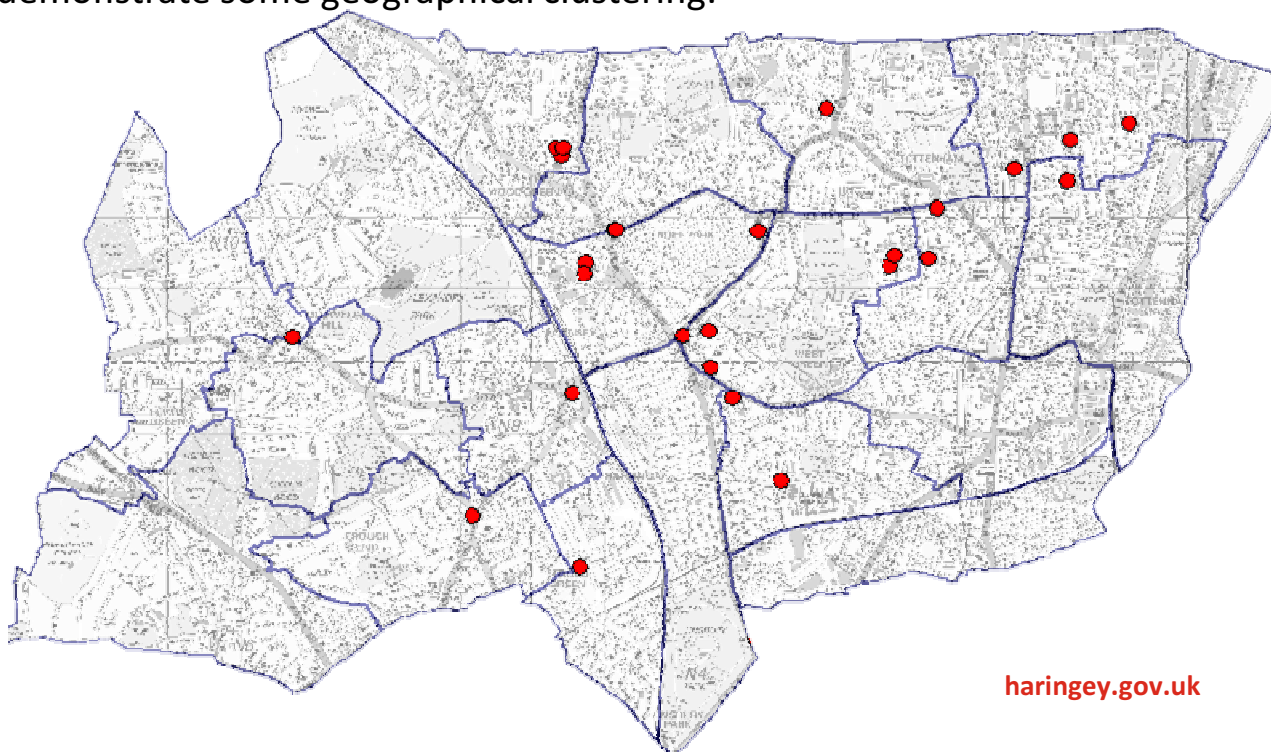


Borough	Lethal Barrelled Firearm Discharges	London Rank
Ealing	-83.3%	1
Barnet	-76.5%	2
Tower Hamlets	-63.2%	3
Lewisham	-61.5%	4
Wandsworth	-42.9%	5
Southwark	-35.3%	6
Waltham Forest	-22.7%	7
Lambeth	-20.0%	8
Harrow	-20.0%	9
Brent	-17.6%	10
Islington	-11.1%	11
Merton	0.0%	12
Barking and Dagenham	0.0%	13
Sutton	0.0%	14
Hounslow	0.0%	15
Bromley	0.0%	16
Redbridge	12.5%	17
Greenwich	25.0%	18
Hillingdon	25.0%	19
Bexley	25.0%	20
Newham	53.8%	21
Croydon	57.1%	22
Hackney	63.2%	23
Enfield	66.7%	24
Kingston upon Thames	100.0%	25
Kensington and Chelsea	133.3%	26
Westminster	175.0%	27
Richmond upon Thames	200.0%	28
<b>Haringey</b>	<b>220.0%</b>	29
Camden	400.0%	30
Havering	600.0%	31
Hammersmith and Fulham	700.0%	32
<b>London Total</b>	<b>12.4%</b>	

▪ Lethal barrelled firearm discharges in Haringey have increased significantly, from 10 up to 32, year on year, a **220%** increase. London has increased by 12% over this same period.

▪ Haringey accounts for **10%** of all lethal barrelled firearm discharges in London.

▪ Firearm related incidents mostly occur to the East of the borough, and show some correlation with known gang linked areas. Offences also demonstrate some geographical clustering.



# Non-Domestic Abuse Violence With Injury **Haringey** LONDON

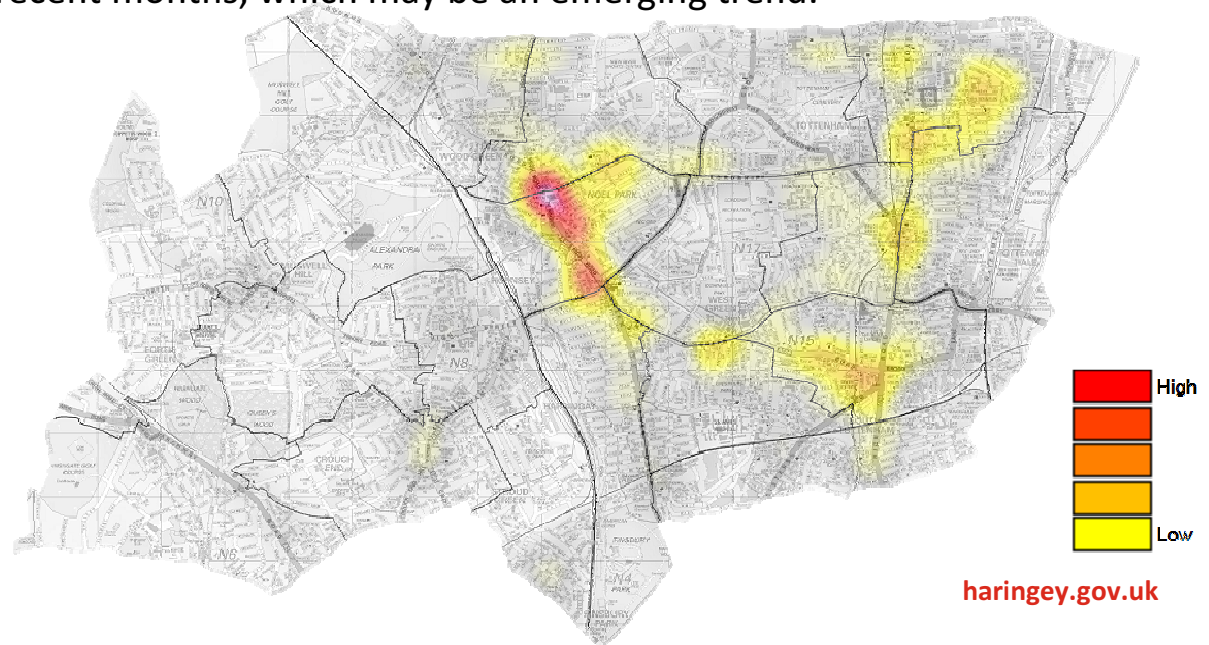
Borough	Non-Domestic Abuse VWI	London Rank
Hammersmith and Fulham	-6.7%	1
Croydon	-5.4%	2
Islington	-4.3%	3
Barking and Dagenham	-4.2%	4
Hillingdon	-3.7%	5
Newham	-3.2%	6
Richmond upon Thames	-3.0%	7
Tower Hamlets	-2.7%	8
Ealing	-2.6%	9
Lambeth	-1.6%	10
Merton	-0.7%	11
Southwark	-0.4%	12
Wandsworth	0.3%	13
Kingston upon Thames	0.4%	14
Camden	1.0%	15
Waltham Forest	1.4%	16
Greenwich	2.2%	17
Barnet	2.5%	18
Redbridge	3.3%	19
Kensington and Chelsea	3.4%	20
<b>Haringey</b>	<b>3.5%</b>	<b>21</b>
Hounslow	4.1%	22
Brent	4.2%	23
Havering	4.6%	24
Harrow	5.5%	25
Lewisham	6.4%	26
Westminster	7.4%	27
Hackney	8.4%	28
Bexley	11.4%	29
Enfield	11.9%	30
Sutton	15.5%	31
Bromley	19.8%	32
<b>London Total</b>	<b>1.9%</b>	

- Non-domestic VWI offences have increased in Haringey by 3.5%, which is larger than the London-wide increase of 1.9%.

- A significant proportion of incidents occur in busy locations, such as shopping centres, transport hubs and key thoroughfares.

- Some incidents are also linked to retail/night time economy related issues, including when individuals have been refused entry to shops or bars/pubs and subsequently attacking staff/security.

- A small increase in violent incidents in park locations has been noted in recent months, which may be an emerging trend.



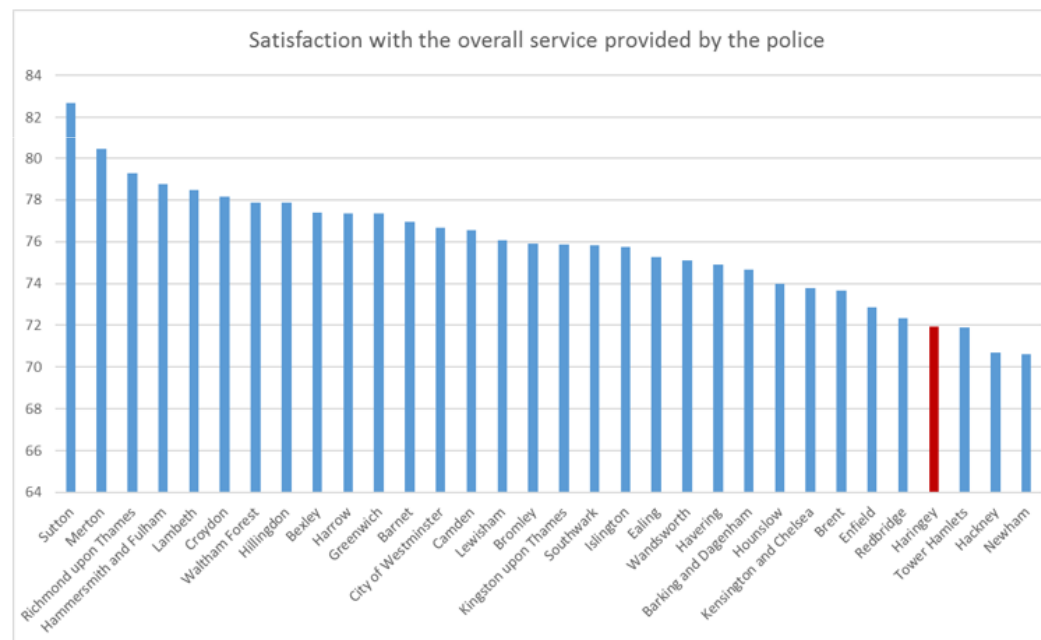
# Confidence and Satisfaction Levels

July 2017



Borough	Satisfaction with the overall service provided by the police	Rank
Sutton	83	1
Merton	80	2
Richmond upon Thames	79	3
Hammersmith and Fulham	79	4
Lambeth	78	5
Croydon	78	6
Waltham Forest	78	7
Hillingdon	78	8
Bexley	77	9
Harrow	77	10
Greenwich	77	11
Barnet	77	12
City of Westminster	77	13
Camden	77	14
Lewisham	76	15
Bromley	76	16
Kingston upon Thames	76	17
Southwark	76	18
Islington	76	19
Ealing	75	20
Wandsworth	75	21
Havering	75	22
Barking and Dagenham	75	23
Hounslow	74	24
Kensington and Chelsea	74	25
Brent	74	26
Enfield	73	27
Redbridge	72	28
<b>Haringey</b>	<b>72</b>	<b>29</b>
Tower Hamlets	72	30
Hackney	71	31
Newham	71	32

■ Haringey is currently ranked 29<sup>th</sup> out of 32 London boroughs for satisfaction with the overall service provided by the police.



# Confidence and Satisfaction Levels

July 2017



- Haringey is currently ranked **4<sup>th</sup> lowest** for satisfaction with the overall service provided by the police, at 72%, compared with a London average of 76%.
- In particular, Haringey is ranked **2<sup>nd</sup> lowest for overall satisfaction for the BAME community**, at 67%. This compares to 77% for the white community in Haringey.
- Haringey has worsened in this measure since the previous reporting period (-2%, from 69%).
- Haringey is ranked **5<sup>th</sup> lowest** for ease of contact, at 89%. The London average is 91%.
- Haringey's ranking for satisfaction with police actions currently sits at 69%, **4<sup>th</sup> lowest** in London, and below the average of 72%.
- Satisfaction with treatment ranks Haringey **24<sup>th</sup> in London**, and satisfaction with follow up ranks the borough **25<sup>th</sup>**.

# Summary

- Several areas of positive performance
- MOPAC Police and Crime Plan priorities better suited to local Haringey needs than previous MOPAC 7 targets
- Challenges include :
  - Responding to Hate Crime issues
  - Continuing to tackle vulnerability, including Domestic Abuse and Youth Violence
  - Improving Confidence and Satisfaction levels